



PAL 2011 Officers

President..... Dana Johnson

Vice President.. Beth Ivens

Secretary..... Dorothy Anderson

Treasurer..... Keith Probert

## Gallery Hours Changed;

Tuesday thru Friday 10am to 4 pm

Monthly Business Meeting;

Second Friday of each month

5:00 pm followed by

“Meet the Artist Reception”



## The P.A.L.'s Fine Art Gallery

300 Hwy 62 W, Yellville, AR 72687

870-405-6316

[www.paletteartleague.org](http://www.paletteartleague.org)

## FEBRUARY AND MARCH EXHIBIT

**Call to all members,** an exhibit of member artwork is in progress at the Gallery. PAL members are encouraged to bring one or two pieces of artwork for sale to the Gallery during regular business hours for exhibited through March. Artwork will not only be on exhibit but will be promoted through the media as an “ORIGINAL ART SALE”.

The Palette Art League will also be setting up a number of Mini Exhibits at several local businesses. This is a great opportunity for artists to get acquainted with the community. Be sure to bring an extra piece of artwork for this project.

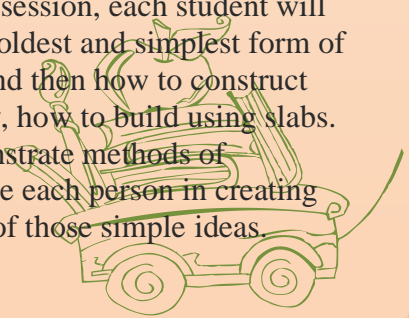
## 2011 Membership dues are now due. \$15.00 for individuals (\$20 couples.)

BY CONTINUING YOUR SUPPORT OF THE PALETTE ART LEAGUE , YOU RECEIVE A UNIQUE WEB PAGE TO SHOWCASE YOUR ARTWORK ON PAL WEBSITE; SHOPPING CART; SPECIAL INVITATION TO ALL PAL EVENTS; OPPORTUNITY TO BE PART OF THE FASTEST GROWING ART COMMUNITY IN NW ARKANSAS; FRIENDSHIP WITH OTHER ARTISTS; AND MEDIA EXPOSURE FOR YOUR ACCOMPLISHMENTS AS ARTISTS.

“Introduction to Hand Building with Clay” by Marian Yancey, clay artist, on March 5 and 19, beginning at 9:30 a.m. in the PAL Gallery classroom; The workshop, designed for beginner students, will include two one-day sessions with the artist, learning the fundamentals of hand building with stoneware clay. Students will receive an overview of the history and function of clay from early times to present. Discussion will include the language necessary to understand the class and enough to move into an intermediate level of discussion.

During the March 5<sup>th</sup> session, each student will make pinch pots, the oldest and simplest form of producing a vessel, and then how to construct with coils, and finally, how to build using slabs.

The artist will demonstrate methods of construction and guide each person in creating their own expansion of those simple ideas.

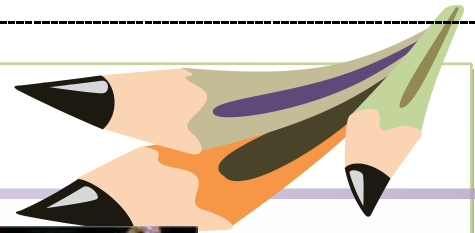


The second session, scheduled on March 19, items from the first session will be returned to students following the bisque ware firing. This session will include discussion of glazes, personal choices and instruction in application in preparation for a final kiln firing to complete the pieces.

Cost of "Introduction to Hand Building with Clay" is \$70. Each student will receive a hand-out, and be provided with all the clay and use of tools, equipment, and supplies necessary to complete their projects. Each student should bring their own lunch. Classroom space is limited to 10 students.

Yancey has been a clay artist since 1982, and is well versed in hand built and wheel thrown pottery and clay sculpture. She has studied ceramic art with several instructors, but said most of her exploration and growth has been through self-study. "Without benefit of the discipline of college ceramic laboratories and the practice of production work, my work is not focused on any particular style. I make things that appeal to me in the moment."

Yancey's pottery reflects her philosophy toward life and her work as she incorporates her respect for and curiosity about all living things. "I was always drawn to the natural world rather than to the synthetic." Many of Yancey's art pottery pieces are incorporated with organic design, with representations of plants and animals that appeal to the artist. The artist's work also is recognized for her use of earth-tone glazes. Admittedly a born researcher, Yancey said she needs to know how things work and consistently pushes the limits of her abilities. "I often have to modify a project because I try to create things in a way that sometimes defy the law of physics," she said. "For me, clay offers seemingly infinite possibilities as a creative outlet." Another aspect of Yancey's philosophy is the belief that everyone has a talent. "People often lament to me that they don't know how to do anything creative, but I think a better statement would be that



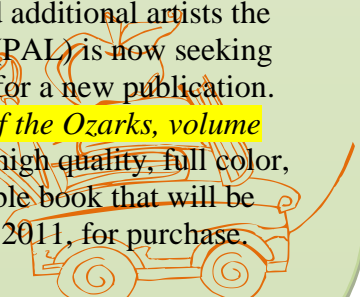
Marion Yancey, Potter

they don't take the time to explore their interests in a way that would identify their talents and allow them to develop them," she stated.

Examples of Yancey's art are on exhibit in the Palette Art League Gallery, located at 300 Highway 62 West. For more information about the workshop or other PAL programs call (870)405-6316, visit the PAL website at [www.paletartleague.org](http://www.paletartleague.org), or email the gallery at [palsgallery@live.com](mailto:palsgallery@live.com).

### **"ART AND ARTISANS OF THE OZARKS," volume two. Art and Artisans sought for a new publication begins this week.**

"*Art and Artisans of the Ozarks, volume one*," now completed and available at many local businesses such as; Yellville Chamber of Commerce, Arvest Bank, First Federal Bank, 1<sup>st</sup> Service Bank all of Yellville, and Sodie's Restaurant, Flippin and at The P.A.L.'s Fine Art Gallery and on the web, [www.paletartleague.org](http://www.paletartleague.org). Due to the wonderful reviews and outstanding requests from supporters and additional artists the Palette Art League (PAL) is now seeking contributing artists for a new publication. "*Art and Artisans of the Ozarks, volume two*", is an all new high quality, full color, hardcover coffee table book that will be available in August 2011, for purchase.



The 2011 publication, "*Art and Artisans of the Ozarks, volume two*," will be a 208 page high quality book bringing together participating artisans in a book designed to highlight the work of individual artists, and showcase the best the Ozarks has to offer in fine art in a variety of media

Submissions to be included in the publication are due no later than June 2011. Artists may choose from several different options to represent them and their art. Each option will include a biography and photograph of the artist and multiple artwork photographs in a portrait style layout. The completed book will measure approximately 9 by 12 inches.

Participating artist will receive a one-year PAL membership, an opportunity to use the free photography sessions being offered to aid in submission of their work and information, a page on the art league website, an exhibit at the P.A.L. Fine Art Gallery, a copy of "*Art and Artisans of the Ozarks, volume two*" and the option to purchase more books at a discounted price. The books will be available nationwide, through the Palette Art League's website, Amazon.com, gift shops, chambers of commerce in area towns, special events throughout the region and through PAL members.

Excitement about the "*Art and Artisans of the Ozarks*," book project continues to grow within the art community. The Palette Art League, is a 501 (c) (3) non-profit organization, monies raised through the sale of this creative collection of books will assist artists in introducing their talents to the communities and support the many creative projects offered through the gallery.

Artists interested in becoming featured in "*Art and Artisans of the Ozarks, volume two*," may visit the PAL website at [www.paletteartleague.org](http://www.paletteartleague.org) for details on the book and guidelines for submitting information and photos, contact the gallery at [palsgallery@live.com](mailto:palsgallery@live.com) or call the Gallery at (870)405-6316 or White Hall Publishing at (870)453-5364.

## Current Workshops...

Jones workshop, each Wednesday, 10 am to 12; illustration techniques using pen & ink with a dry watercolor technique. Sign up now

## Coming up.....event listings;

Pastel Techniques 101, TBA Basic Drawing, TBA

Hand Building with Clay, Yancey; Mar 5 & 19;  
Worster Working In Clay, Apr 2 & 16

Pal's Host After Hours for Cotter Chamber of Commerce at Gallery; Mar 10. 5 to 6:30.

PAL Member, Vaughn Johnson speaks to Arkansas Young Artists Association Spring Convention: Mar 15. <http://www.ayaainfo.com>

Pal begins "Paint the Town Project"; Thursday mornings beginning March 3<sup>rd</sup>.

HAL Photography Show; Mar 7, thru April 1; [kajon@inreach.com](mailto:kajon@inreach.com) for details.

Indian Hills Arkansas Heritage Art Show; May2 -28 [gkellyar@artelco.com](mailto:gkellyar@artelco.com) for details.

"White River Artists" exhibiting at Hill Country Gallery, Mountain Home, Month of March.

Young Artist of Arkansas Competition; May 9-13; [www.paletteartleague.org](http://www.paletteartleague.org).

1<sup>st</sup> Annual Northwest Heritage Photography Show; June 1 thru 10. Details TBA [www.paletteartleague.org](http://www.paletteartleague.org).

"Plein Air on the White River," May 19-21; [whiteriverartist@gmail.com](mailto:whiteriverartist@gmail.com)

Workshop in Batiking; Beth Ivens ;July TBA; [www.paletteartleague.org](http://www.paletteartleague.org)

Art Expo @ Gallery; July 6-15 details TBA

Release of "*Art and Artisans of the Ozarks*" vol. 2; August 2011 Book Signing Gala; Details TBA;

[www.paletteartleague.org](http://www.paletteartleague.org) "Paint the Town Exhibit," Plein Air ;Sept TBA

Annual Turkey Trot Art Show; Oct 6-7 & 8; [www.paletteartleague.org](http://www.paletteartleague.org)